



Back to School 2024

# what's new

for Imagine MyPath®

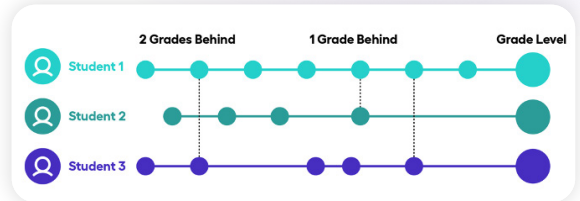
This year, the Imagine MyPath team is rolling out enhancements from assessment and reporting to on-demand tutoring and new lessons to help keep students moving forward, faster.

## Assessment Updates

### Domain-Level Placement on Individual Learning Paths

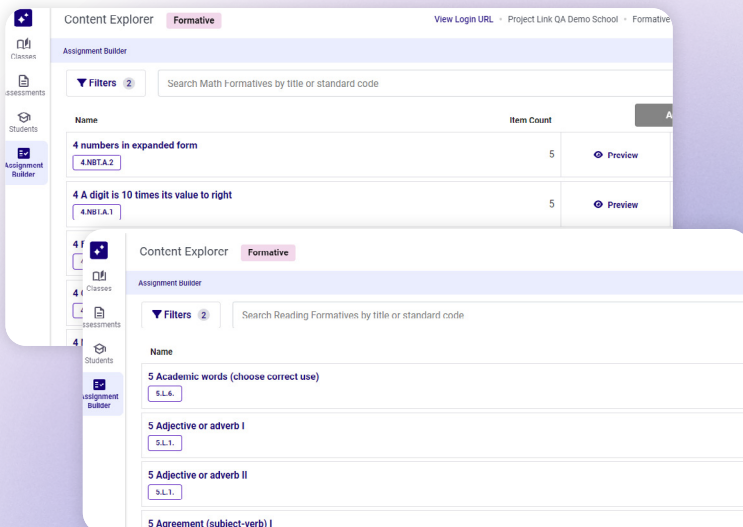
An enhanced approach to placement now uses assessment data at the domain level instead of only the student's overall assessed grade level to create their Individual Learning Path (ILP).

- Students receive an ILP even more precisely targeted to their needs
- Enhances learning efficiency by ensuring that students don't miss any content they need to learn or waste time engaging with content they already know
- Available for users of the MyPath Assessment and for NWEA MAP™ Growth integrations



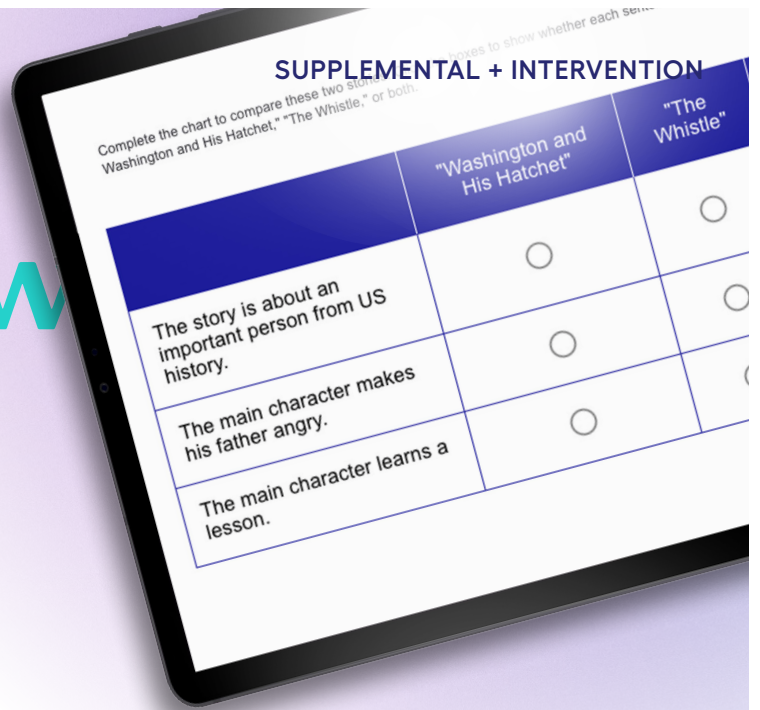
### Formative Assessments in Assignment Builder

Quickly and confidently measure student proficiency on skills and standards to guide instruction using high-quality, pre-built formative assessments now available in Assignment Builder.



- Nearly 1,000 new formative assessments for K–8 math and reading
- Aligned to standards for all 50 states
- Searchable by subject, grade, state standard, and keyword; preview item content and item alignment to your state standards
- Assignable to individual students and groups of students
- Automatic scoring and reporting

• (Upper left) Math dashboard,  
(Bottom right) ELA dashboard



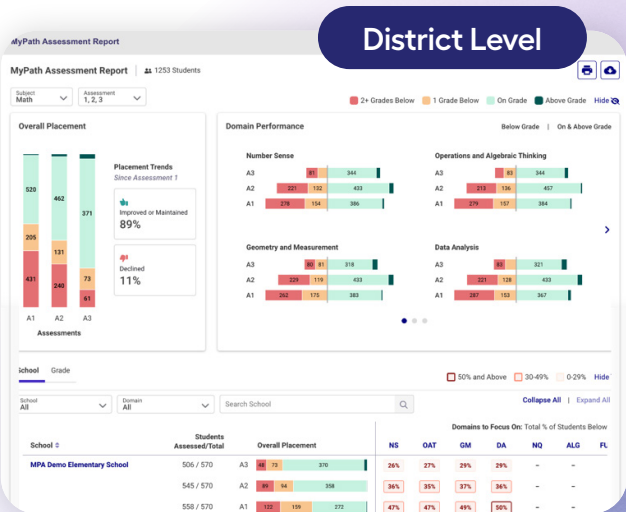
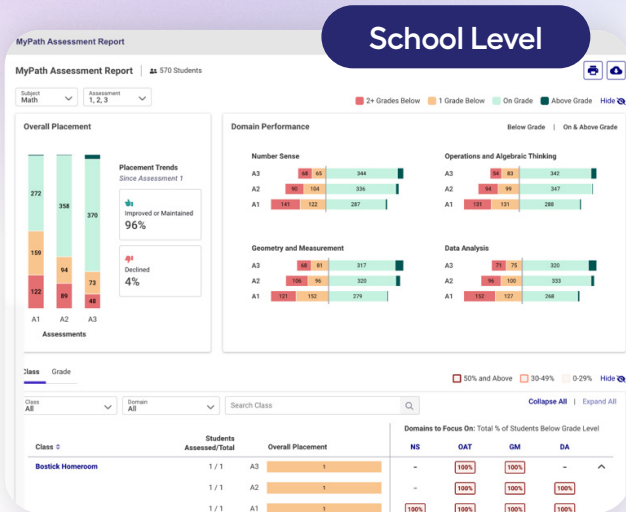
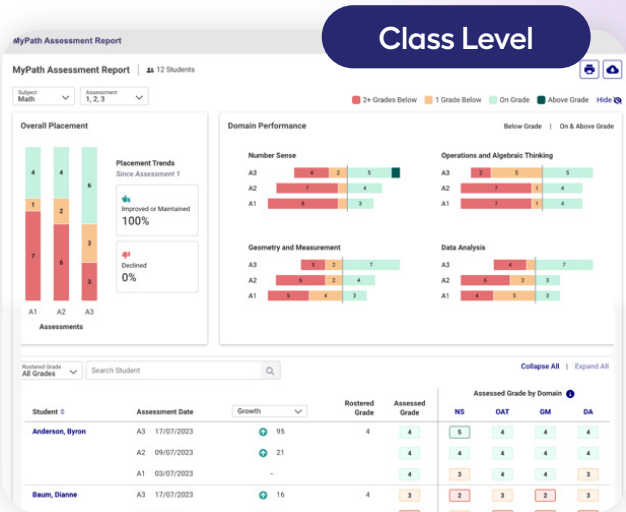


# Reporting Updates

## Domain-Level Information on the MyPath Assessment Report

Now the MyPath Assessment Report provides even more granular insight into student performance in specific MyPath Assessment domains. With this domain-level data, educators can:

- Make informed decisions around effectively differentiating and guiding instruction and intervention for all levels of learners in the classroom
- Track specific domain performance trends by student, grade, school, and class to determine where to provide resources and support and to evaluate current supports and interventions



## New Standards Proficiency Report

All-new standards reporting provides a snapshot of student progress towards standards proficiency. With this report, educators can:

- See students' current knowledge proficiency on grade-level state standards (aligned to all 50 states) and identify where they need support
- Identify students' areas of strengths and challenges to help guide instruction and intervention

Standards by Grade	Informational Text				Language				
	Overall	RI.4.1	RI.4.2	RI.4.3	Overall	RL.4.1	RL.4.2	RL.4.3	
Average % Correct	41%	65%	80%	53%	45%	66%	50%	60%	80%
Wilfred Skiles	●	●	●	●	●	●	●	●	
Francis Kuhic	●	●	●	●	●	●	●	●	
Martha Zeferhill	●	●	●	●	●	●	●	●	
Alexis Reilly	●	●	●	●	●	●	●	●	
Leonard Spinka	●	●	●	●	●	●	●	●	

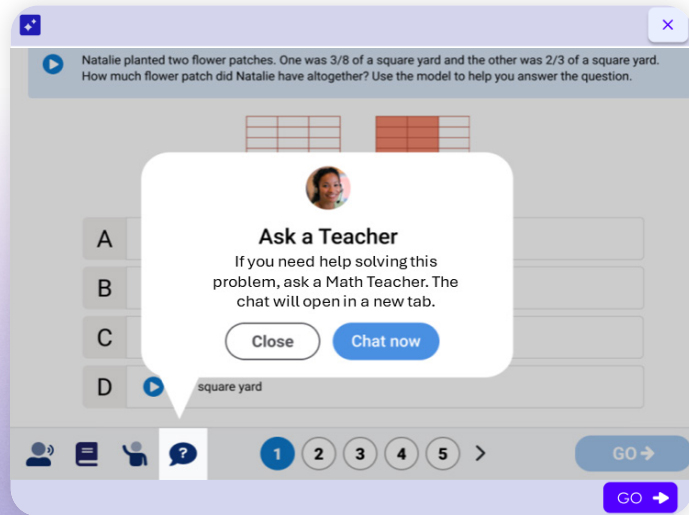
Class- and student-level reporting is available

## Feature and Content Updates

### On-Demand Math Tutoring with Certified, Live Teachers

From within a secure online platform, students can access real-time, one-on-one support from certified, live math teachers at the click of a button. On-Demand Tutoring in Imagine MyPath Math includes:

- A deeply trained cohort of certified teachers
- Availability for grades 3–12
- One-on-one rigorous instruction via chat or voice; available in English and Spanish
- Dynamic visual models via a two-way interactive whiteboard



## New K–2 Math Content in Assignment Builder

To help keep your youngest students engaged, new gamified K–2 lesson content has been added to Assignment Builder.

- Assignable to students who need additional practice in specific skill areas
- Printable worksheets are provided alongside lessons
- Available in both English and Spanish



Connect with other Imagine MyPath teachers in the Teachers' Lounge at [imaginelearning.com/community/teachers-lounge/](https://www.imaginelearning.com/community/teachers-lounge/)