



Imagine Edgenuity®

2024–2025 Massachusetts Course List



Core Curriculum and Electives

English Language Arts

- English Language Arts 6
- English Language Arts 7
- English Language Arts 8
- English Language Arts 9 ^H EX
- English Language Arts 10 ^H EX
- English Language Arts 11 ^H EX
- English Language Arts 12 ^H EX
- Literacy & Comprehension I
- Literacy & Comprehension II
- Expository Reading and Writing EX
- Introduction to Communications and Speech
- Classic Novels & Author Studies**

** Supplemental modules (can be used alongside other courses or customized into other ELA courses in place of existing novel studies)

Mathematics

- Mathematics 6
- Mathematics 7
- Mathematics 8
- Pre-Algebra EX
- Algebra I ^H EX
- Geometry ^H EX
- Algebra II ^H EX
- Precalculus ^H EX
- Mathematics I ^H EX
- Mathematics II ^H EX
- Mathematics III ^H EX
- Mathematical Models with Applications
- Financial Math
- Trigonometry* EX
- Statistics
- Concepts in Probability and Statistics
- Advanced Quantitative Reasoning

Science

- Science Grade 6
- Science Grade 7
- Science Grade 8
- Physical Science
- Biology ^H EX
- Chemistry ^H EX
- Earth and Space Science
- Environmental Science
- Introductory Physics ^H

Social Studies

- Grade 6 World Geography and Ancient Civilizations I
- Grade 7 World Geography and Ancient Civilizations II
- Grade 8 Government and Civil Life
- U.S. History I ^H EX
- U.S. History II ^H EX
- World History I ^H EX
- World History II ^H EX
- Government
- Economics and Personal Financial Literacy
- Human Geography
- Civics and Citizenship*

World Languages

MIDDLE SCHOOL

- Spanish 1
- Spanish 2
- French 1
- French 2
- Chinese 1
- Chinese 2
- German 1
- German 2
- Latin 1
- Latin 2

HIGH SCHOOL

- Spanish I EX
- Spanish II EX
- Spanish III
- French I EX
- French II EX
- French III
- Chinese I
- Chinese II
- German I
- German II
- Latin I
- Latin II



Core Curriculum and Electives

Advanced Placement

All AP courses except Computer Science Principles, English Literature and Composition, Environmental Science, Human Geography, and Psychology require the purchase of textbooks. Textbooks are not included and can be ordered from online booksellers.

- Biology
- Calculus AB
- Computer Science Principles
- English Language & Composition
- English Literature & Composition
- Environmental Science
- Human Geography
- Psychology
- Statistics
- U.S. Government & Politics*
- U.S. History
- World History: Modern

National Test Preparation

- ACCUPLACER®
- ACT WorkKeys®
- ACT®
- ASVAB® (Math, Verbal, Science)
- GED®
- HiSET®
- PSAT®
- SAT®

Massachusetts Test Preparation

- MCAS English Language Arts 10
- MCAS Math
- MCAS Biology
- MCAS Chemistry
- MCAS Physics

General Electives

MIDDLE SCHOOL

- Digital Literacy*
- Health Quest*
- Keyboarding and Applications*
- Middle School Computer Science
- Online Learning and Digital Citizenship*

HIGH SCHOOL

- Art History I
- Computer Applications – Office 2019/Office 365
- Contemporary Health (semester)*
- Contemporary Health (full-year)
- Ethnic Studies*
- Foundations of Personal Wellness
- Introduction to Art
- Introduction to Computer Science
- Lifetime Fitness (semester)*
- Lifetime Fitness (full-year)
- Personal Finance*
- Strategies for Academic Success*

Social Emotional Learning

Imagine Purpose 6-12 runs on the Imagine Edgenuity LMS and are available at an additional cost. Imagine Purpose K-5 is also available on a separate platform.



- Character & Leadership Development*
- Climate & Culture Transformation*
- College & Career Readiness*
- Mental Health & Wellness*
- Personal Development*
- Restorative Practices and Principles*
- Social & Emotional Success*
- Unlock Your Purpose*
- Trauma-Informed Living*



Exceptional Students Courses

These courses, designed for high school students who are three or more grade levels behind, are priced separately by enrollment. Each course includes approximately 25 lessons but may be a full year of content for students with significant cognitive challenges.

ENGLISH LANGUAGE ARTS

- Basic Reading and Writing I*
- Basic Reading and Writing II*
- Basic Reading and Writing III*
- Basic Reading and Writing IV*

MATHEMATICS

- Basic Math I* and II*
- Algebra Essentials I* and II*
- Geometry Essentials I* and II*
- Statistics and Probability Essentials*

SCIENCE

- Life Science Essentials I* and II*
- Earth Science Essentials I* and II*
- Physical Science Essentials I* and II*

SOCIAL STUDIES

- U.S. History Essentials I* and II*
- World History Essentials I* and II*
- Civics and Government Essentials*
- Economics Essentials*
- Personal Finance Essentials*

Career and Technical Education

CTE Electives can be added to concurrent or site licenses for an additional cost.

Career Readiness

- Career Explorations I*
- Career Explorations II*
- Career Explorations III*
- Career Explorations
- Career Management*
- Career Planning and Development

Career Clusters

AGRICULTURE, AND NATURAL RESOURCES

- Agribusiness Systems*
- Animal Systems*
- Food Products and Processing Systems*
- Introduction to Agriculture, Food, & Natural Resources*
- Plant Systems*
- Power, Structural, and Technical Systems*

ARTS AND COMMUNICATION SERVICES

- Fundamentals of Digital Media*
- Intro to Careers in Arts, A/V Tech, and Communications

BUSINESS AND CONSUMER SERVICES

- Business Computer Information Systems
- Business English
- Business Information Management
- Business Law*
- Careers in Marketing Research*

- Introduction to Business
- Introduction to Consumer Services*
- Keyboarding and Applications*
- Personal Care Services*
- Small Business Entrepreneurship
- Technology and Business

CONSTRUCTION

- Construction Careers*
- Introduction to Careers in Architecture and Construction*

CTE ELECTIVE

- Banking Services Careers*
- Careers in Logistics Planning & Management Services*
- Family and Community Services*
- Introduction to Careers in Finance*
- Introduction to Careers in Government & Public Administration*
- Introduction to Careers in Transportation, Distribution, and Logistics*
- Introduction to Human Services*

EDUCATION

- Introduction to Careers in Education and Training*
- Teaching and Training Careers*



Career and Technical Education

CTE Electives can be added to concurrent or site licenses for an additional cost.

Career Clusters (continued)

HEALTH SCIENCE

- Careers in Allied Health*
- Health, Safety and Ethics in the Health Environment*
- Health Science Concepts
- Introduction to Careers in the Health Sciences*
- Introduction to Health Science
- Medical Terminology
- Nursing: Unlimited Possibilities & Unlimited Potential*
- Nursing Assistant
- Physicians, Pharmacists, Dentists, Veterinarians and Other Doctors*
- Public Health: Discovering the Big Picture in Health Care*
- Therapeutics: The Art of Restoring and Maintaining Wellness*
- Pharmacy Technician

INFORMATION TECHNOLOGY

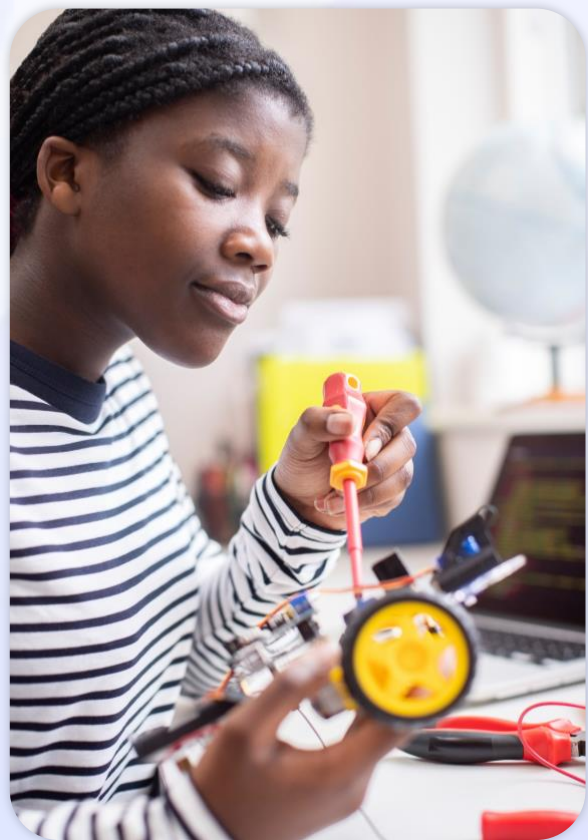
- Computer Science Principles
- Fundamentals of Computer Systems*
- Fundamentals of Programming & Software Development*
- Introduction to Computer Science
- Introduction to Information Technology
- Introduction to Information Technology Support & Services*
- Introduction to Network Systems*
- Network System Design*
- New Applications: Web Development in the 21st Century*
- Software Development Tools*

LEGAL AND PROTECTIVE SERVICES

- Corrections: Policies and Procedures*
- Fire & Emergency Services*
- Forensics: Using Science to Solve a Mystery*
- Introduction to Law, Public Safety, Corrections, & Security*
- Law Enforcement Field Services*
- Legal Services*
- Security and Protective Services*

MANUFACTURING, ENGINEERING AND TECHNOLOGY

- Engineering and Design*
- Engineering and Product Development*
- Introduction to Human Growth and Development*
- Introduction to STEM*
- Science and Mathematics in the Real World*
- Scientific Discovery and Development*
- Scientific Research*
- STEM and Problem Solving*



Subscription-based Electives

Career and Elective Courses by eDynamic Learning

Imagine Edgenuity offers a suite of eDynamic Learning electives on a subscription basis, allowing students to pursue a large range of interests in language arts, creative arts, STEM, and CTE. These electives are priced separately by enrollment.

MIDDLE SCHOOL ELECTIVES

- Middle School 2D Studio Art 1A*
- Middle School 2D Studio Art 1B*
- Middle School Coding 1A*
- Middle School Coding 1B*
- Middle School Digital Art & Design 1A*
- Middle School Digital Art & Design 1B*
- Middle School Exploring Music 1A*
- Middle School Exploring Music 1B*
- Middle School Game Design 1A*
- Middle School Game Design 1B*
- Middle School Journalism 1A*
- Middle School Journalism 1B*
- Middle School Photography 1A*
- Middle School Photography 1B*
- Middle School Robotics 1A*
- Middle School Robotics 1B*
- Middle School Tech Apps: Grade 6*
- Middle School Tech Apps: Grade 7*
- Middle School Tech Apps: Grade 8*

HIGH SCHOOL ELECTIVES

- American Sign Language 1A*
- American Sign Language 1B*
- American Sign Language 2A*
- American Sign Language 2B*
- American Sign Language 3A*
- American Sign Language 3B*
- Anthropology 1*
- Anthropology 2*
- Archaeology*
- Black History in America 1A*
- Black History in America 1A*
- Creative Writing: Unleashing the Core of Your Imagination*
- Gothic Literature*
- History of the Holocaust*
- Lord of the Rings: An Exploration of the Films and Their Literary Influences*
- Mythology & Folklore*
- Personal Psychology 1*
- Personal Psychology 2*
- Philosophy*
- Social Problems 1*
- Social Problems 2*
- Sociology 1*
- Sociology 2*
- Theater, Cinema, Film Production 1A*
- Theater, Cinema, Film Production 1B*
- Women's Studies*
- World Religions*

AGRICULTURE, FOOD, & NATURAL RESOURCES

- Agriscience 1*
- Agriscience 2A*
- Agriscience 2B*
- Biotechnology 1A*
- Biotechnology 1B*
- Forestry & Natural Resources*
- Principles of Agriculture, Food, and Natural Resources*
- Veterinary Science*

ARTS, AUDIO/VIDEO TECHNOLOGY, & COMMUNICATIONS

- 3D Modeling 1A*
- 3D Modeling 1B*
- Animation 1A*
- Animation 1B*
- Digital Photography 1A*
- Digital Photography 1B*
- Digital Photography 2*
- Journalism 1A*
- Journalism 1B*
- Music Appreciation*
- Public Speaking 1A*
- Public Speaking 1B*
- Social Media*

BUSINESS MANAGEMENT & ADMINISTRATION

- Accounting 1A*
- Business Information Management 1A*
- Business Information Management 1B*
- Business Law 1A*
- Business Law 1B*
- Human Resource Management 1A*
- Human Resource Management 1B*
- International Business*
- Legal Admin Specialist 1A*
- Legal Admin Specialist 1B*
- Management 1A*
- Management 1B*
- Medical Office Administration 1A*
- Medical Office Administration 1B*
- Office Administration 1A*
- Office Administration 1B*
- Principles of Business, Marketing, and Finance 1A*
- Principles of Business, Marketing, and Finance 1B*

EDUCATION & TRAINING

- Child Development 1A*
- Child Development 1B*
- Early Childhood Education 1A*
- Early Childhood Education 1B*
- Real World Parenting*

ENERGY

- Renewable Technologies 1A*
- Renewable Technologies 1B*

HEALTH

- Allied Health Assistant 1A*
- Allied Health Assistant 1B*
- Anatomy and Physiology 1A*
- Anatomy and Physiology 1B*
- Biotechnician 1A*
- Biotechnician 1B*
- Biotechnician 2A*
- Biotechnician 2B*
- Dental Assistant 1A*
- Dental Assistant 1B*
- Dental Assistant 2A*
- Dental Assistant 2B*
- EKG Technician 1A*
- EKG Technician 1B*
- Emergency Medical Responder 1A*
- Emergency Medical Responder 1B*
- Medical Assistant 1A*
- Medical Assistant 1B*
- Medical Diagnostic Technology 1B*
- Medical Lab Assisting 1A*
- Medical Lab Assisting 1B*
- Medical Lab Assisting 2A*
- Medical Lab Assisting 2B*
- Sports Medicine 1A*
- Sports Medicine 1B*
- Sports Medicine 2A*
- Sports Medicine 2B*

HOSPITALITY & TOURISM

- Culinary Arts 1A*
- Culinary Arts 1B*
- Culinary Arts 2*
- Hospitality & Tourism 1*
- Hospitality & Tourism 2A*
- Hospitality & Tourism 2B*
- Hotel Management 1A*
- Hotel Management 1B*
- Restaurant Management*



HUMAN SERVICES

- Cosmetology 1*
- Cosmetology 2*
- Cosmetology 3A*
- Cosmetology 3B*
- Fashion Design*
- Interior Design*
- Nutrition & Wellness*
- Peer Counseling*

INFORMATION TECHNOLOGY

- Advanced Networking 1A*
- Advanced Networking 1B*
- Computer Maintenance 1A*
- Computer Maintenance 1B*
- Cybersecurity 1A*
- Cybersecurity 1B*
- Digital Media Web Design 2A*
- Digital Media Web Design 2B*
- Foundations of Game Design 1A*
- Foundations of Game Design 1B*
- Game Design 2A*
- Game Design 2B*
- Game Design for Chromebooks 1A*
- Game Design for Chromebooks 1B*
- Network Security Fundamentals 1A*
- Network Security Fundamentals 1B*

- Operational Cybersecurity 1A*
- Operational Cybersecurity 1B*
- Principles of Information Technology 1A*
- Principles of Information Technology 1B*
- Web Development 2A*
- Web Development 2B*

LAW, PUBLIC SAFETY, CORRECTIONS, & SECURITY

- Criminal Justice Elective IA*
- Criminal Justice Elective IB*
- Criminology*
- Military Careers*
- Law & Order*
- National Security*
- Principles of Public Service*

MANUFACTURING

- Manufacturing 1A*
- Manufacturing 1B*

MARKETING

- Advertising and Sales Promotion*
- Digital Marketing 1A*
- Marketing 2A*
- Marketing 2B*
- Marketing Foundations 1A*

- Marketing Foundations 1B*
- Professional Sales and Promotion 1A*
- Professional Sales and Promotion 1B*
- Sports & Entertainment Marketing 1A*
- Sports & Entertainment Marketing 1B*

SCIENCE, TECHNOLOGY, ENGINEERING, & MATHEMATICS (STEM)

- Applied Engineering 1A*
- Applied Engineering 1B*
- Astronomy 1A*
- Astronomy 1B*
- Concepts of Engineering & Technology*
- Forensics 1A: Introduction*
- Forensics 1B: The Science of Crime*
- Forensics Science 1*
- Forensics Science 2*
- Great Minds in Science*
- Marine Science 1A*
- Marine Science 1B*
- Robotics 1A*
- Robotics 1B*
- Robotics 2A*
- Robotics 2B*

Health and Fitness Electives

Imagine Learning partners with Carone Learning to offer an extensive catalog of one-semester health and fitness electives through our Instructional Services group. These courses are priced separately by enrollment.

TO LEARN MORE ABOUT IMAGINE LEARNING'S INSTRUCTIONAL SERVICES OFFERING, PLEASE VISIT

<https://www.imaginelearning.com/services/instructional-services/6-12-certified-teaching-services/>

- Adaptive PE*
- Advanced PE 1 & 2
- Anatomy*
- Comprehensive PE*
- Concepts in Fitness*
- Credit Recovery PE 1 & 2
- Drugs & Alcohol*
- Exercise Science*
- Family & Consumer Sciences*
- Family Living & Healthy Relationships*
- First Aid & Safety*
- Fitness Fundamentals 1 & 2
- Flexibility Training*
- Group Sports*
- Health & Personal Wellness*
- Health Careers*
- HOPE 1 & 2
- Individual Sports*
- Intro to Coaching*
- Life Skills*
- Middle School Fitness Basics 1 & 2
- Middle School Intro to Group Sports 1 & 2
- Middle School Health*
- Middle School Intro to Individual Sports 1 & 2
- Middle School Life Skills*
- Personal Health and Fitness*
- Personal Training*
- Personal Training Concepts*
- Physiology*
- Running*
- Sports Officiating*
- Strength Training*
- Walking Fitness*
-

Notes

* One-semester course

^H Also available for honors

^{EX} Available in both EdgeEX and non-EdgeEX versions

AP[®], Advanced Placement[®], SAT[®], PSAT[®], and ACCUPLACER[®] are registered trademarks of the College Board.

ACT[®] and ACT WorkKeys[®] are registered trademarks of ACT, Inc.

ASVAB[®] (Armed Services Vocational Aptitude Battery) is a registered trademark of the United States Military Entrance Processing Command.

GED[®] is a registered trademark of the American Council on Education.

HiSET[®] is a registered trademark of Educational Testing Service (ETS).





imagine
edgenuity®



imaginelearning.com/imagine-edgenuity
877-725-4257 • solutions@imaginelearning.com